

Agility Installation Instructions

Release date: 11/22/2013

Revised: 05/10/2016

N U C R A F T

Tools Required and Initial Notes

Tools Required For Assembly

- 2 People
- Cordless Drill
- Allen Head Drill Bit Set
- #2 Phillips Bit
- Level

Hardware Included

- ¼-20 Allen Head Machine screws
- ¼-20 Phillips Head Machine Screw

Initial Notes

- Pictures in instructions may not represent the exact unit being installed
- Read all instructions thoroughly prior to beginning the installation

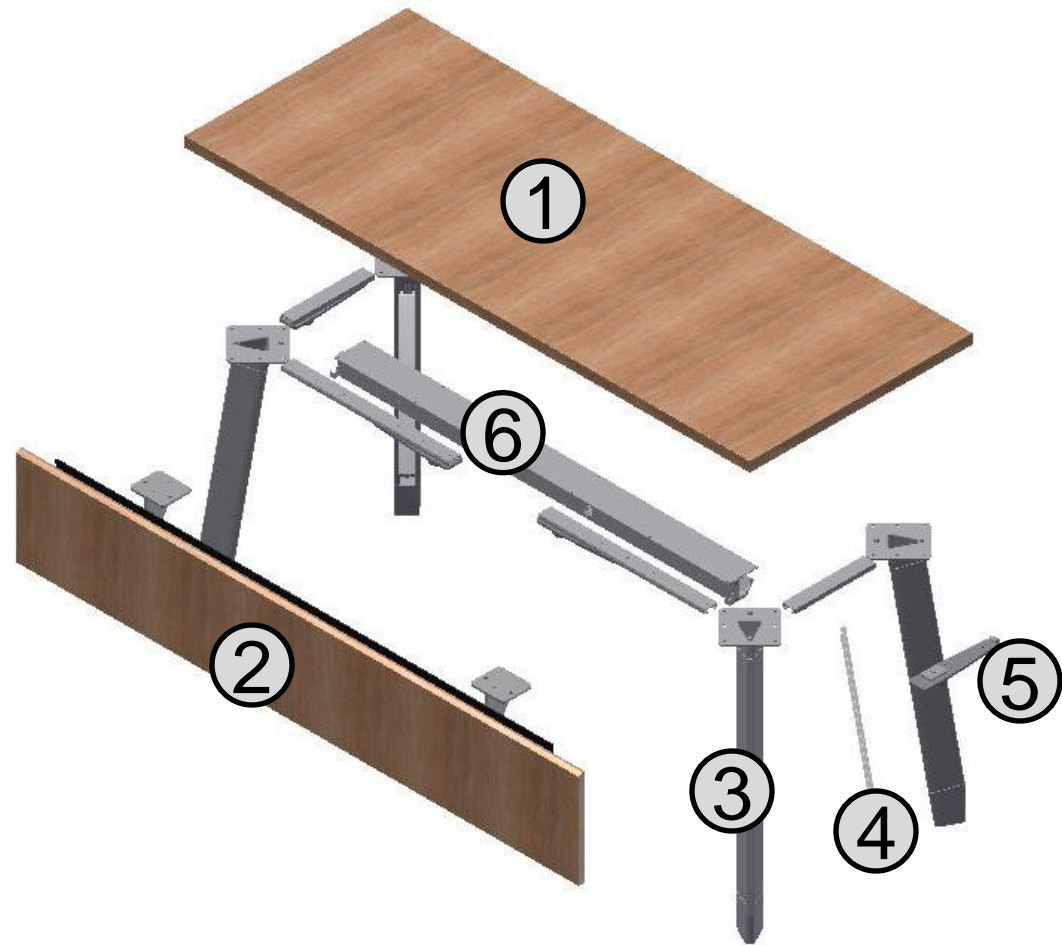
Agility Components



Agility Components

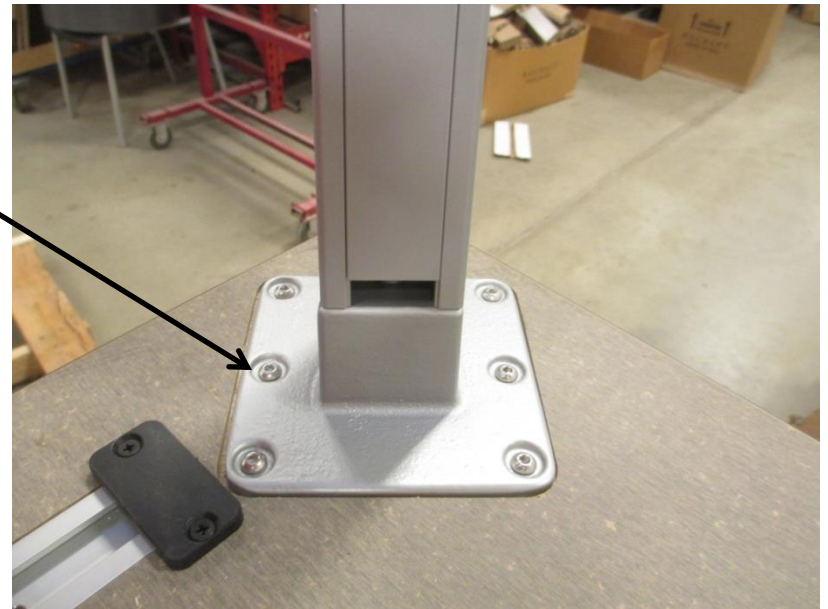
Agility Component Description

1. Top
2. Modesty Panel
3. Leg
4. Leg Wire Manager Cap
5. Ganging Connector
6. Wire Management Trough



Installation Step 1

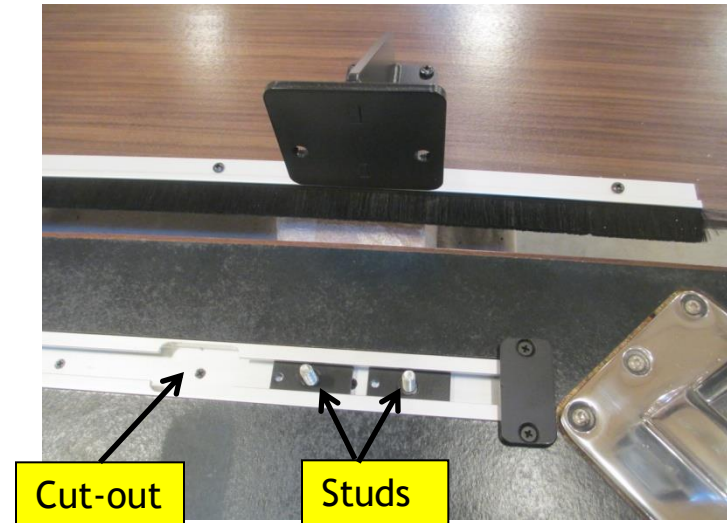
- On fixed leg tables, attach each leg to the table top using the supplied ¼-20 screws per the photo to the right (6 places on each leg). The leg should angle toward the outside of the table top.



- On Knock Down tables, the mount plate will ship attached to the top and the leg will need to be attached per the KD operation page of this instruction.

Installation of Modesty Panels

- The modesty panel will have screws already installed into the inserts. Remove these screws, and use them for the bracket installation
- Attach the modesty panel bracket using the supplied $\frac{1}{4}$ -20 Philips head screw. Line the holes in the bracket up with the threaded inserts in the modesty panel
- Slide the mounting studs into the mounting extrusion per the top photo to the right. There is a cut-out in the center of the extrusion that the studs fit in.
- Set the modesty bracket over the studs and screw on two rubber knobs at each modesty bracket per the bottom photo to the right.



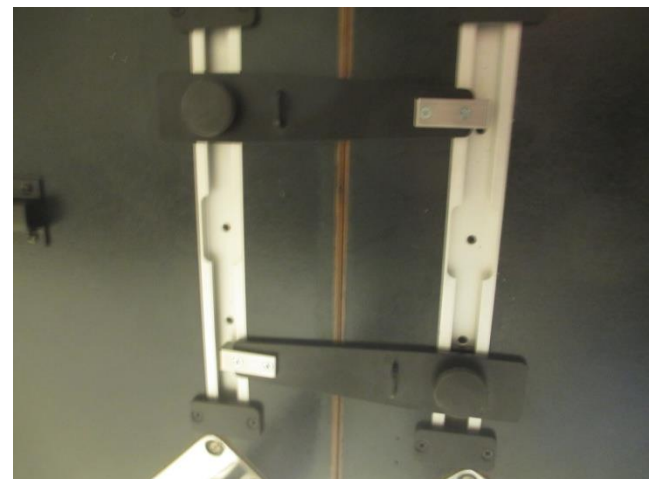
Operation of Ganging Connectors

- Twist the rubber knob to loosen the ganging arm when in the stored position.
- Rotate the ganging arm and hook the track on the 2nd table.
- Pull the ganging arm tight to bring the tables tight together and tighten the rubber knob.
- Repeat for each ganging arm (two per table - to - table connection).

Stored Ganging

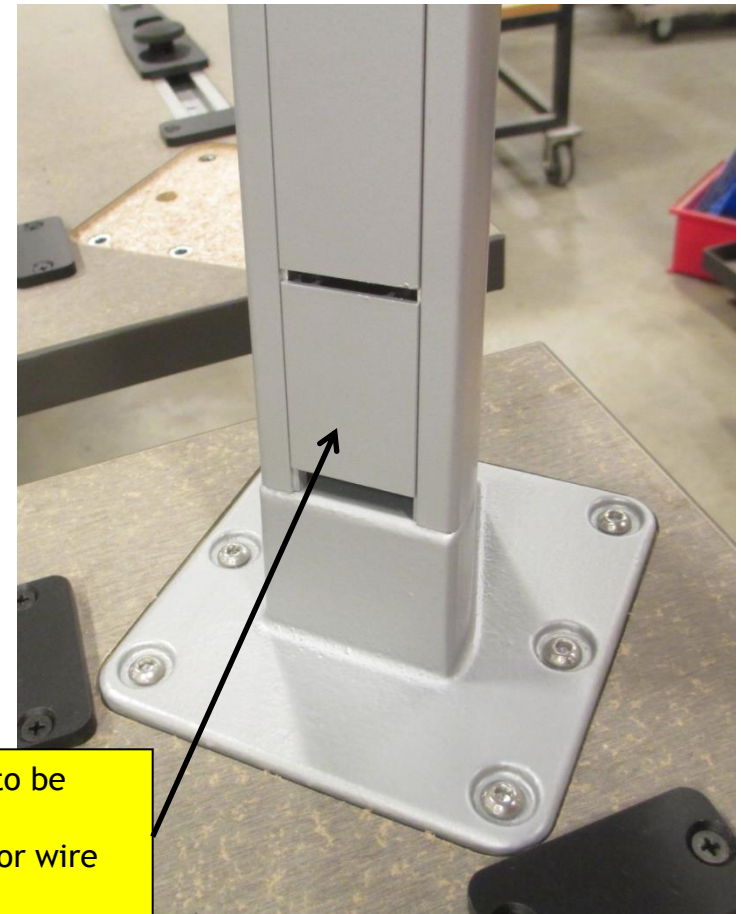


Ganging in Use



Wire Management (If Necessary)

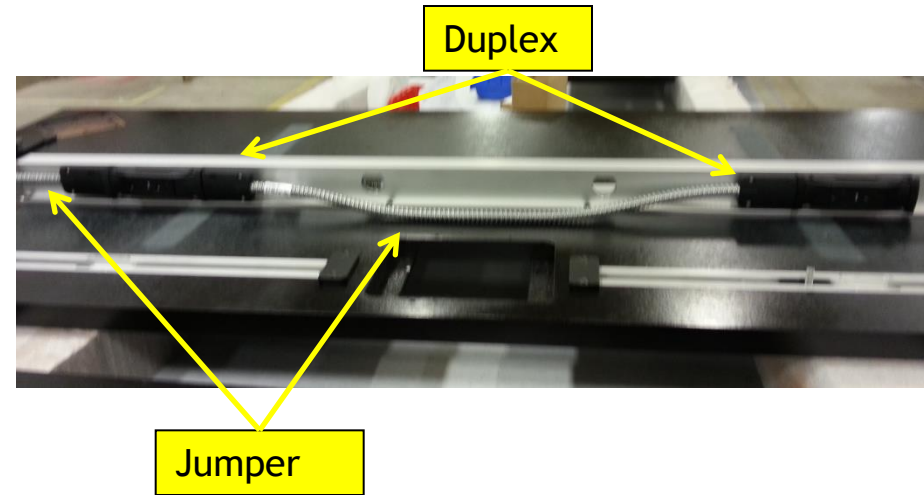
- Each leg comes with a wire manager cap. Three legs on each table have a full length cover that leaves only a $\frac{1}{2}$ " finger grab area. One leg comes with a 3" - long piece of the wire manager cap that can be removed. This is to allow for proper room for running a power in-feed through the leg.
- NOTE: This 3" piece and its corresponding long section can be relocated to whichever leg is intended to be used for wire management.
- The wire manager cap is friction fit only so no tools are required for removal.
- For any legs that will not be used for wire management the cap should be installed so that it is flush with the foot of the leg so that the $\frac{1}{2}$ " finger gap is at the top of the leg.



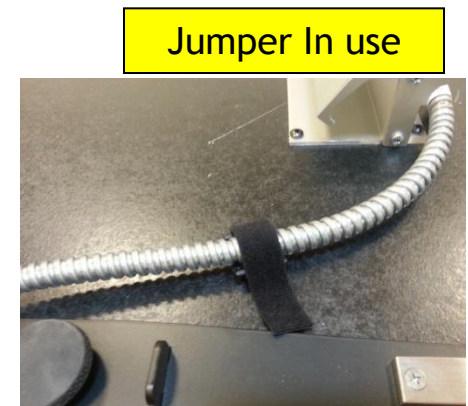
3" section to be removed if necessary for wire routing.

Wire Management (If Necessary)

- If modular power is purchased with the table, each table will come with 2 duplexes and two power jumpers. One jumper is to go from duplex to duplex and the 2nd jumper is designed to go from table to table.

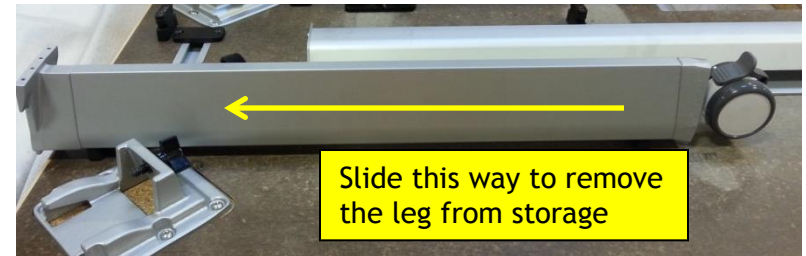


- There are clips and velcro included that secure the jumper to the underside of the table in either a stored position or an in use position.



Operation of KD Legs

- Remove the leg from the storage pegs on the underside of the table top by sliding it ½” to the outside of the table and lift off the pegs.



- Slide the leg into the mounting plate per the photo to the right. Legs are interchangeable so any leg can go in any mount plate.



- Turn the knob to thread the pin into the leg and tighten to draw the leg into position. See photo.

- Repeat the above for all remaining legs.

