

FLOW Conference Table Installation Instructions

Revised 9-15-2014

N U C R A F T

Tools Required and Initial Notes

Tools Required For Assembly

- 2 People
- Phillips Head Screwdriver
- Drill with #2 and #3 Phillips bit
- ¼” Allen Wrench
- 1/8” Allen Wrench
- 5/32” Drill Bit
- Level
- Draw Tight Fastener Tool (Included)

Hardware Included

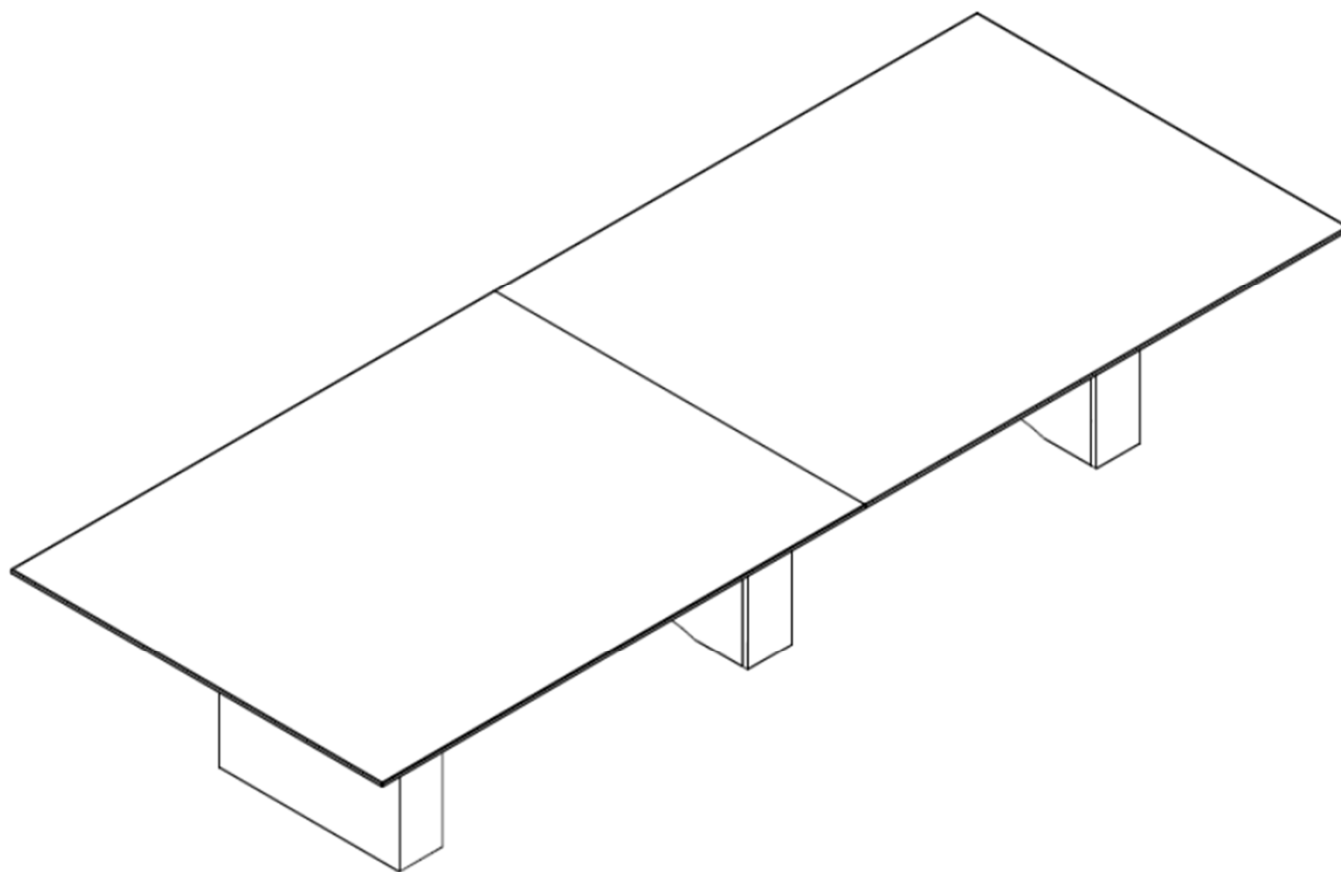
- BOLT, 3/8” UNC x 5/8” L-HW2248
- BOLT, 5/16-18 x 5/8 Flt Socket head cap (Post Leg Base ONLY)
- SCREW, 10-12 x 1-1/4” PHIL
- SCREW, #12 x 1” PAN-PHIL
- Draw-Tight Hardware

Initial Notes

- Pictures in instructions may not represent the exact table being installed
- Read all instructions thoroughly prior to beginning the installation
- Tables 120” and less will be shipped with the Beams and Power Island attached to the bases, so Step 1 can be skipped.

NUCRAFT

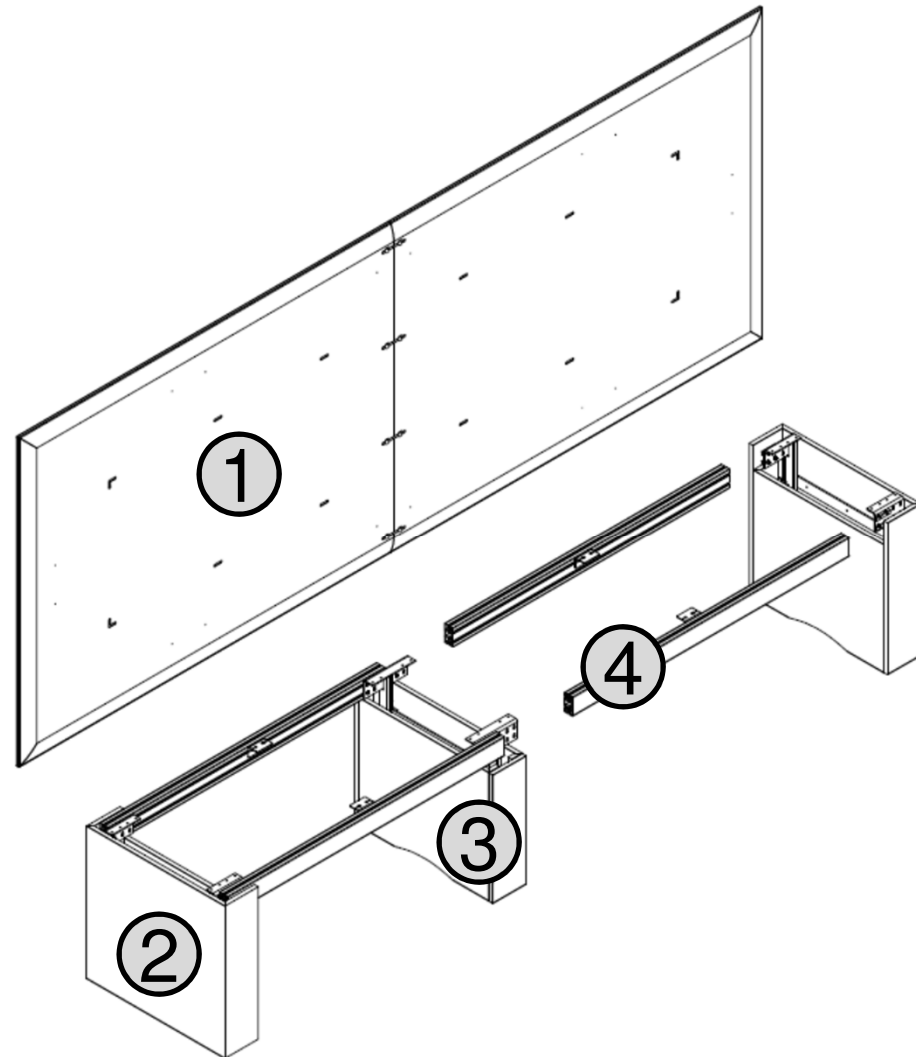
FLOW NT Table



FLOW NT Table

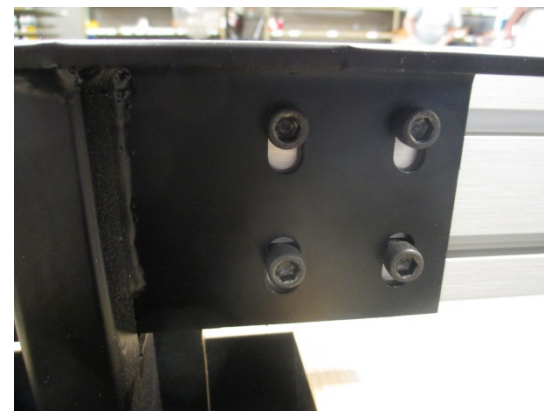
Flow Component Description

1. Work Surface
2. End Base
3. Center Base
4. Main Beam



Installation Step 1 - For tables over 120" (if your table is 120" or less skip to step 3)

- Loosen the clamp bars from the base - DO NOT remove.
- Locate the labels and match the beams to the correct placement on the bases
- Attach Main Beam to End Base utilizing the clamp bars and sliding them into the main beam. Assure Beam is tight to the base panel and 1/8" top of the panel
- Tighten Cap Screws to secure the beam to the base.
- Attach Main Beam to Center Base. Assure Beams are tight and flush at the joint. If there is not a center base skip to next step
- Tighten the cap screws to secure the beam to the base.



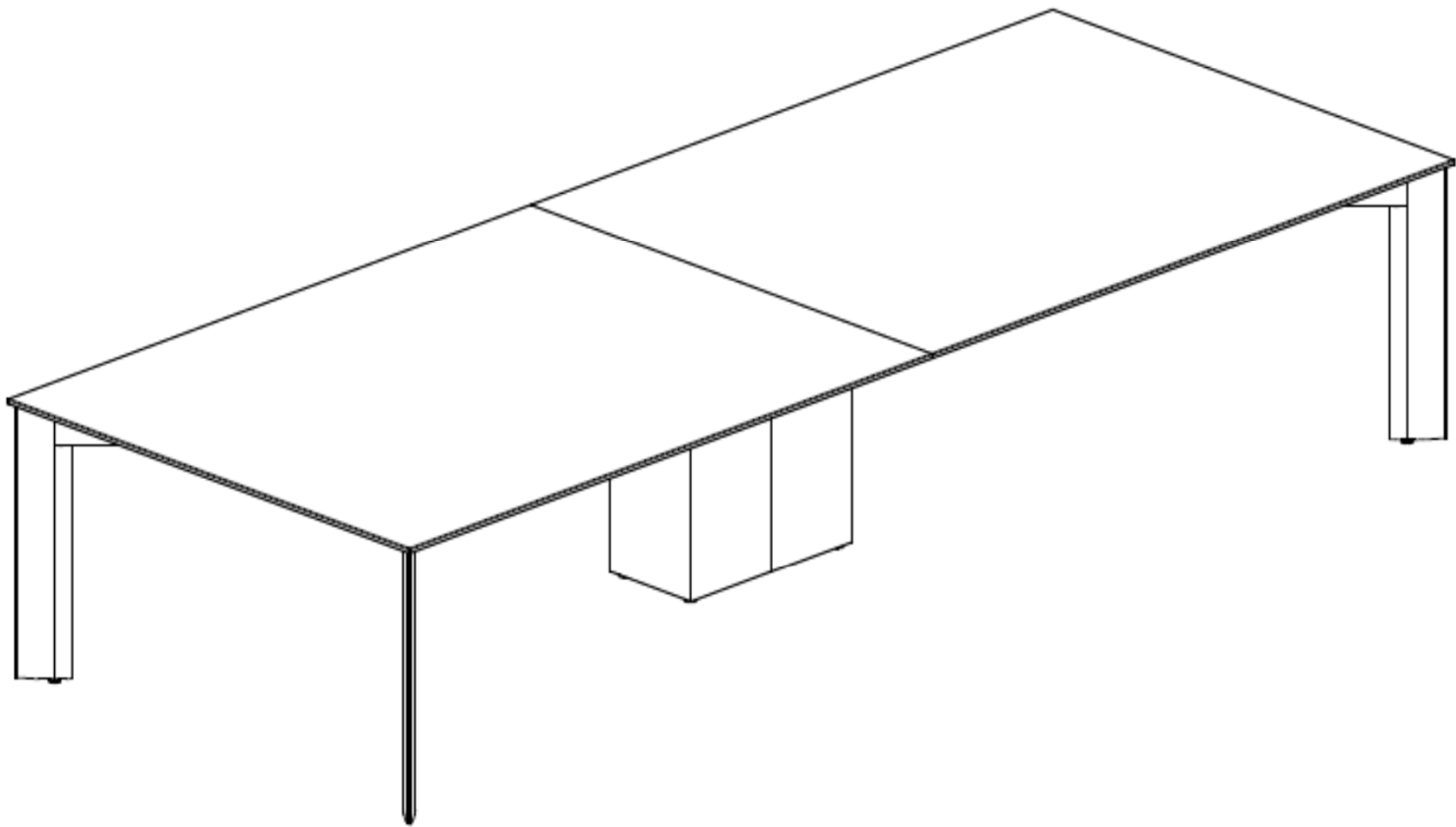
Installation Step 2 & 3

- Using a level on the main beam, assure that the base is sitting level. Adjust the glides as necessary to assure that the base is level before proceeding.
- Align the top with the corners of the bases utilizing the “L” shaped notches on the underside of the table.
- With multiple piece tops, join the two halves together utilizing the supplied draw tight hardware.
- Utilizing the 1” #12 screws provided with the hardware fasten the table top to the base using the brackets that are attached to the base. - Utilize all holes that are intended to attach the base to the top.



NUCRAFT

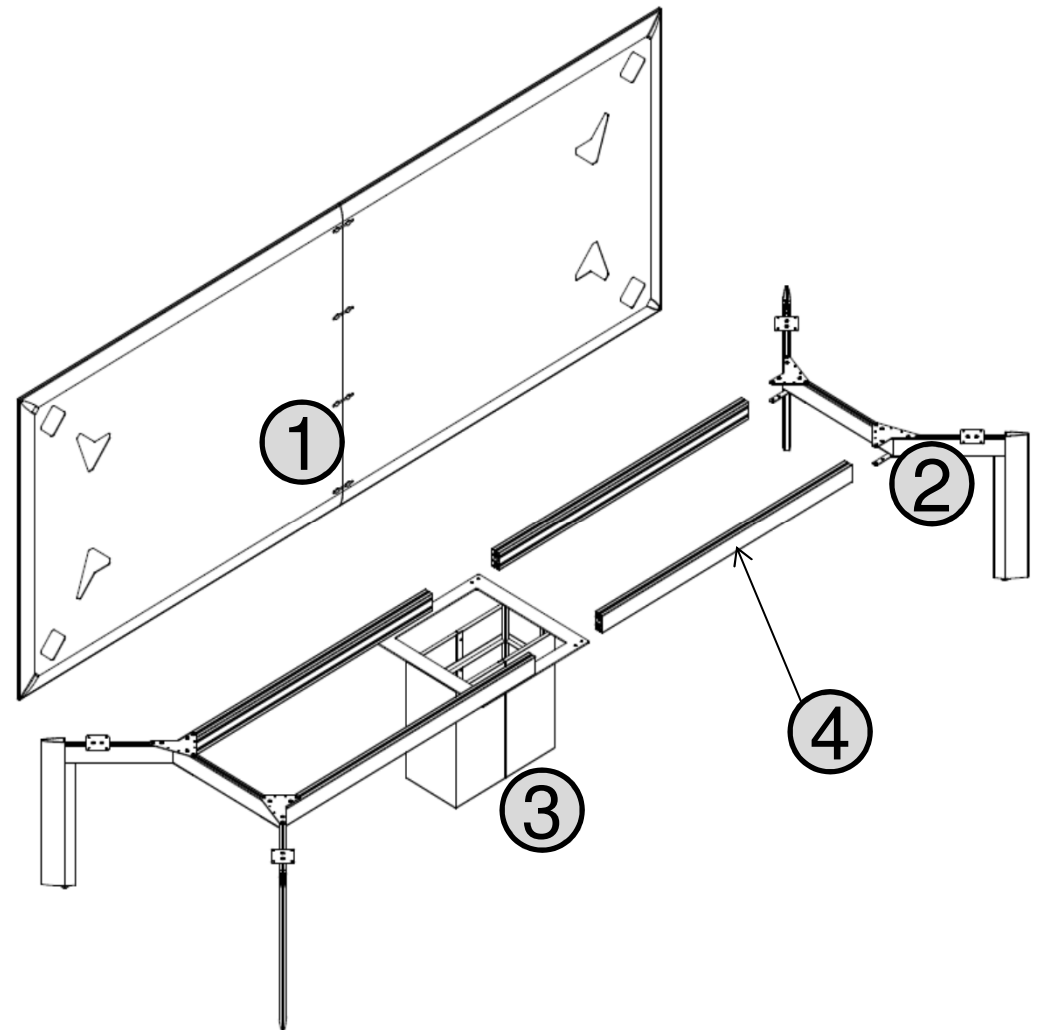
FLOW Table With Post Leg Bases



FLOW Table with Post Leg Bases Exploded

Flow Post Leg Component Description

1. Work Surface
2. End Base
3. Center Base
4. Main Beam



Installation Step 1 & 2

- Slide the clamp bars from the end base into the main beam.
- Tighten the screws that fasten the end base to the main beam.
- Attach the main beam to the center base per the photo to the right.
- Move to Step 2 in the Flow or Flow XT instructions above.

