

NUCRAFT

Flow





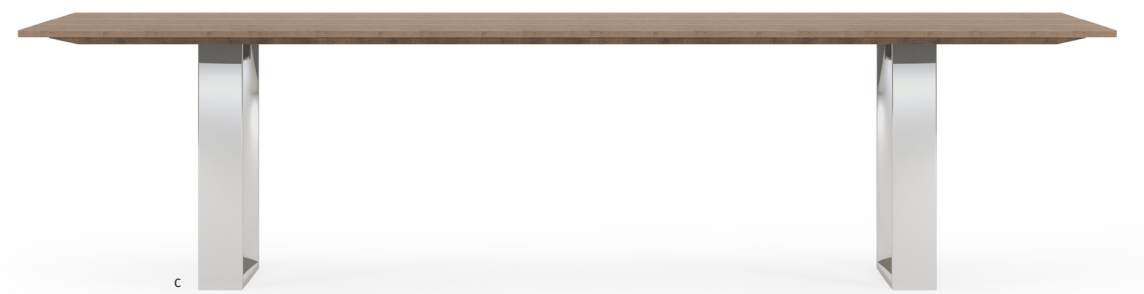
FLOW™ TABLE A broad palette of material and base options allow Flow to satisfy a full range of aesthetic and price point options. Stone, glass, wood or laminate tops can be paired with base styles offered in wood, metal and paint. Above: **96" x 48" Satin Black Glass rectangle table with rectangle Oak Linea veneer base.** Cover: **84" x 48" rectangle table with hoop base** shown in white satin backpainted glass and polished chrome.



a



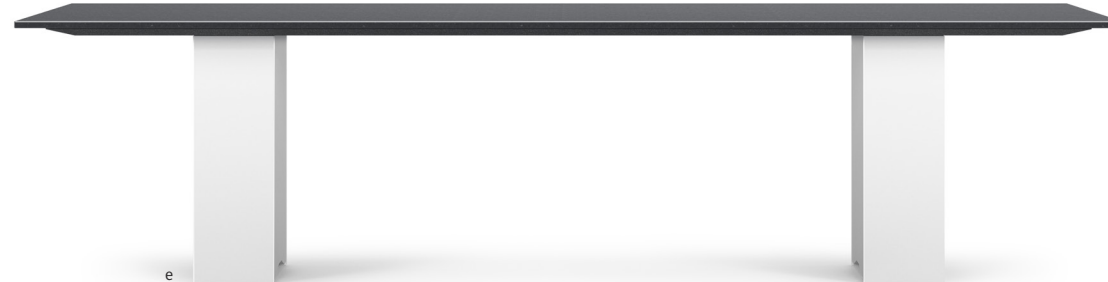
b



c



d



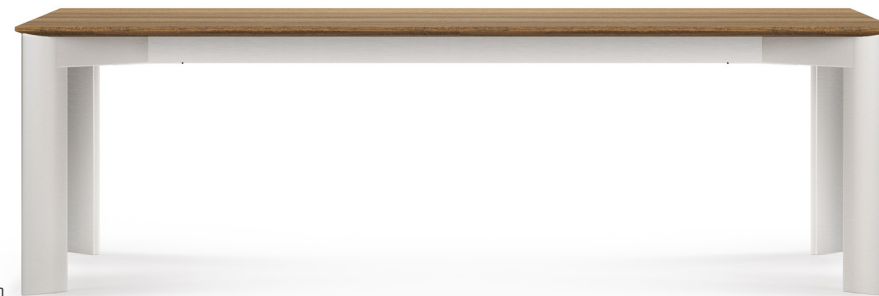
e



f



g

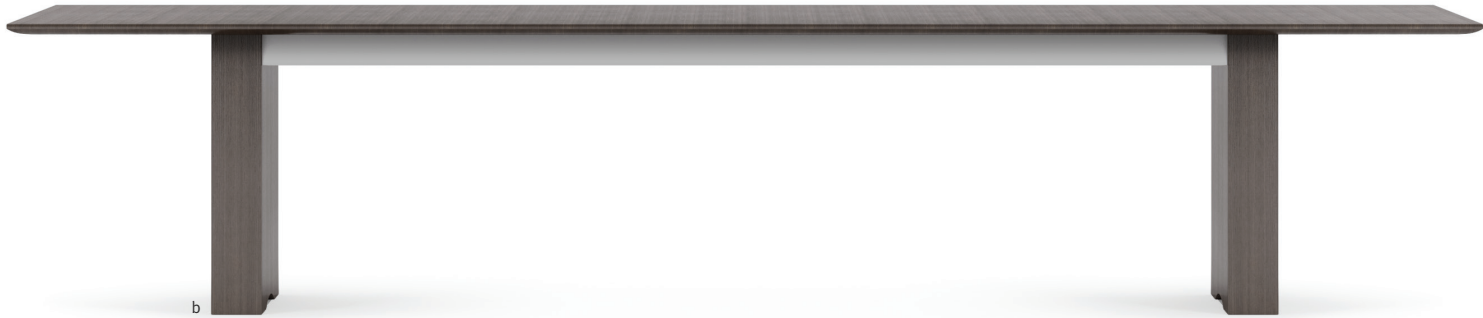


h

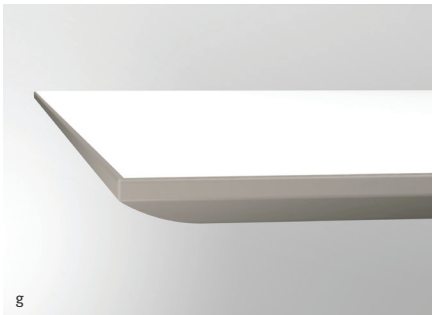
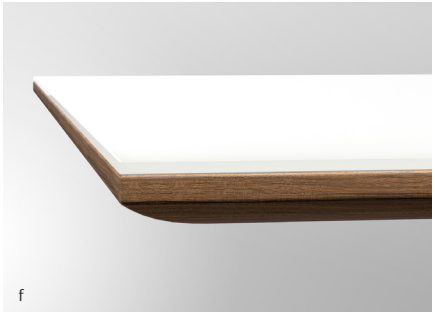
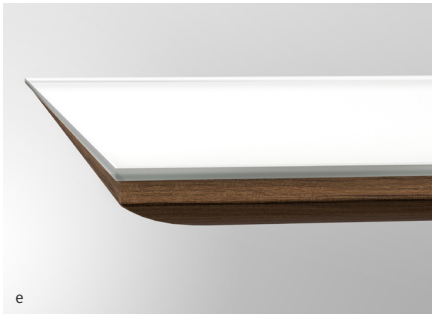


i

FLOW INTRODUCTION Available in five shapes: rectangle, round, boat, sightline and radius rectangle. Bases available in rectangle, expandable rectangle, four post, panel, hoop, T-base, column (stone top only), cylinder (round only), island and metal X-base (round only) and cone base (round only). Base materials offered in veneer, powder coat, paint and polished chrome. **a.** 48" round table, metal X-base shown in Quill glass and Storm powder coat | **b.** 96" boat table, panel base shown in Euro Birch Linea | **c.** 120" rectangle table, hoop base shown in Portabello Oak and polished chrome | **d.** 96" rectangle table, rectangle base shown in Carrara Marble and Otter | **e.** 120" rectangle table, column base shown in Black granite and Cloud paint | **f.** 72" rectangle table, T-base shown in Clove and Burnished powder coat | **g.** 120" radius rectangle table, island base shown in Oak Linea | **h.** 120" rectangle table, four post base shown in Paldao and clear anodized metal | **i.** 60" round table, cylinder base shown in Carrara Marble and Canyon Paldao.



FLOW TABLE SIZES In lengths from 72" to 240", and widths from 36" to 72", Flow tables can address a wide range of application needs. A variety of power and data connection options offer functional, aesthetic and pricing scalability. Above, all shown in Zinc Walnut: **a. 72" rectangle table, rectangle base** | **b. 144" rectangle table, rectangle base** | **c. 240" rectangle table, expandable rectangle base.** **EDGE DETAILS** Right page: **d. veneer edge** | **e. glass edge** | **f. laminate with hardwood edge** | **g. laminate with reverse flow edge** | **h. laminate with square edge** | **i. stone edge.**

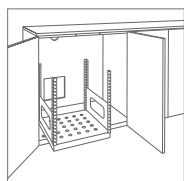
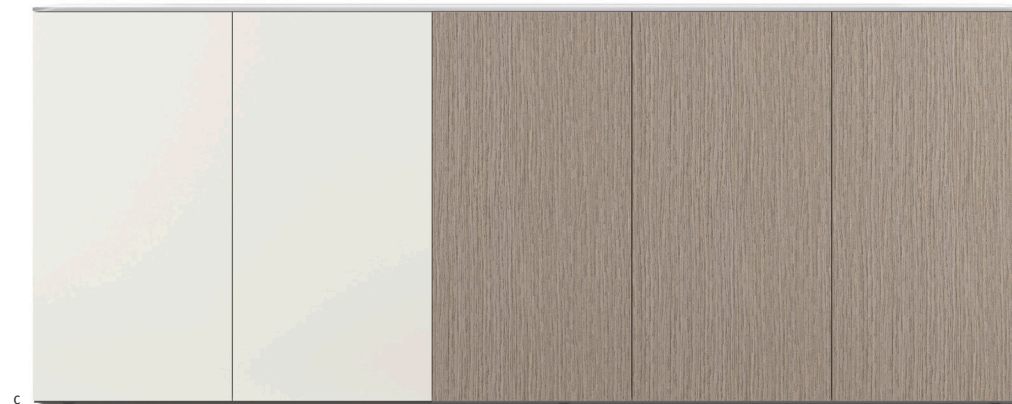




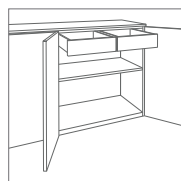
FLOW ROUND TABLES Available with round tops and two base styles. Seated and standing heights available in veneer, laminate, glass, stone and solid surface.
Above: **a.** 48" round table, cylinder base shown in Natural Paldao | **b.** 48" round table, metal X-base shown in Quill glass and polished chrome | **c.** 36" round café height table, metal X-base shown in Urban Planked Oak laminate and Burnished powder coat | **d.** 60" round table, cone base shown in Carrara Marble and Silver Birch Linea | **e.** 90" wall-hung credenza shown in Quill satin backpainted glass, Dune Flat Cut Oak and Oyster paint.



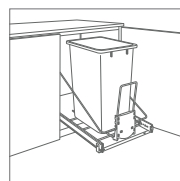
FLOW CREDENZA BASES Available as a case only or one of four metal leg styles: inset, edge-mounted, cradle and blade. Base materials offered in powder coat or polished chrome. Above: **a.** 90"x36" credenza with cradle base shown in Bianco Carrara stone, Black Ash and polished chrome | **b.** 72"x29" credenza with blade base shown in Oak Linea and black powder coat | **c.** 72"x24" credenza with inset base shown in Marron Walnut and black powder coat | **d.** 72"x24" credenza with edge-mounted base shown in Marron Walnut and black powder coat | **e.** 72" x 24" credenza case only shown in Marron Walnut.



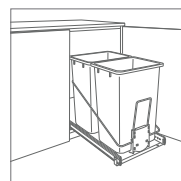
Sliding equipment rack



Top drawers

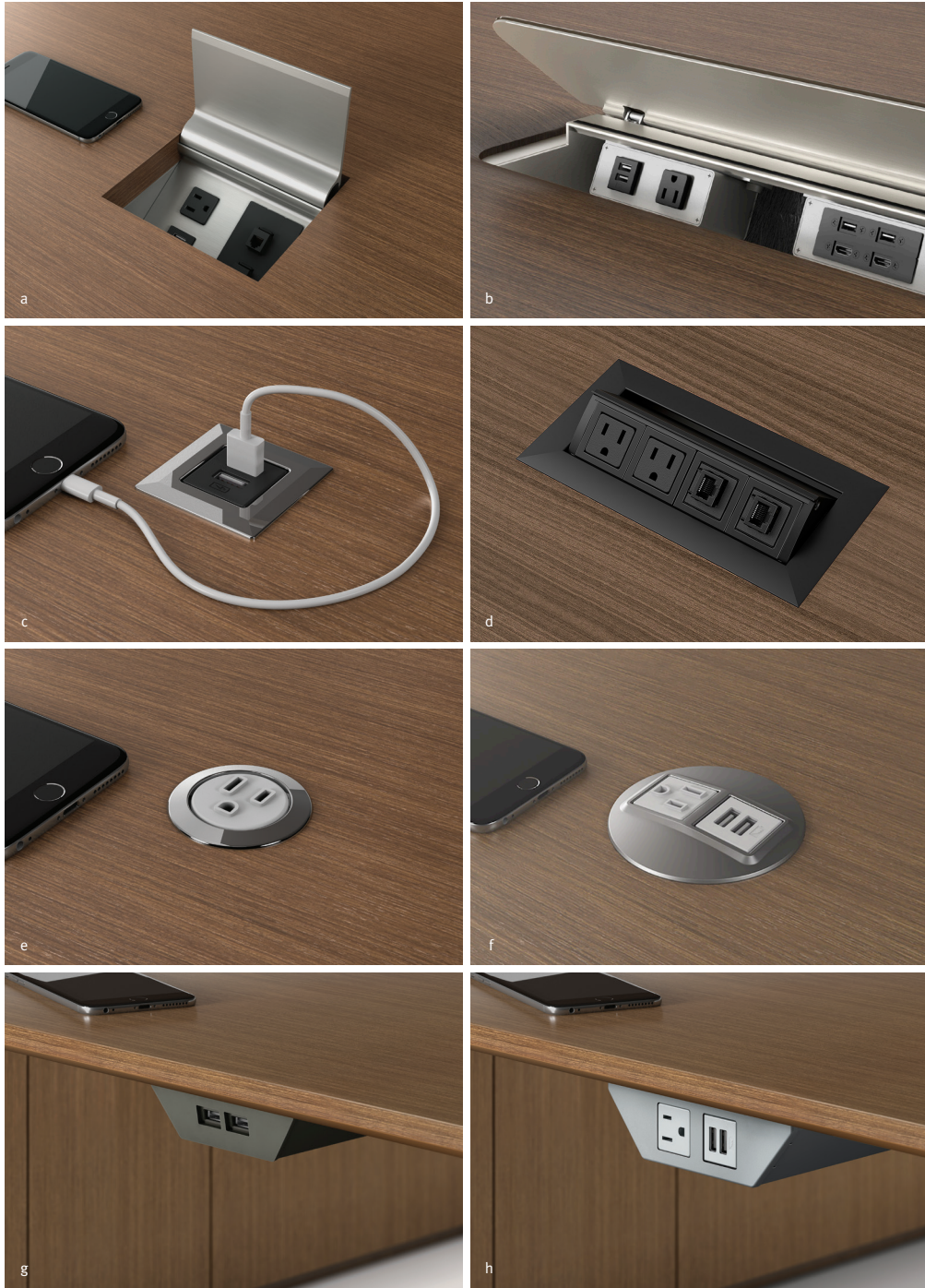


Single trash/recycling unit



Double trash/recycling unit

FLOW CREDENZAS Available in four heights: wall-hung, low, conference or buffet, and four lengths: 36", 54", 72" or 90". Top material options include: veneer, stone, glass, solid surface or laminate. Case materials are offered in veneer, laminate and paint, and door styles are available in vertical or horizontal veneer, Plank, Chevron, or painted, laminate and veneer door combinations. Base style is offered as a case only or one of four metal leg styles: inset, edge-mounted, cradle and blade. Base materials offered in powder coat or polished chrome. Additional options include: a sliding equipment rack, pull-out top drawers and single or double trash/recycling unit(s). Above: **a. 72"x24" credenza with blade base** shown in Otter Walnut chevron and polished chrome | **b. 54"x24" credenza with cradle base** shown in Bramble Rift Cut Oak and polished chrome | **c. 90"x36" credenza case only** shown in white satin backpainted glass, Cloud paint and Silver Birch Linea | **d. 72"x29" credenza case only** shown in Quill satin backpainted glass and Dune Flat Cut Oak horizontal | **e. 90"x29" credenza with inset base** shown in Walnut plank and black powder coat | **f. 36"x36" credenza with edge-mounted base** shown in Zinc Walnut, Burnished paint and Shadow powder coat



FLOW POWER OPTIONS Available in both table top and undersurface mount.
 Table top options: **a. Power Matrix Small with USB option** shown in clear anodized metal | **b. Power Island** shown in Clove glass | **c. Square USB Spec** shown in black and polished chrome | **d. Tech Node** shown in black anodized metal | **e. Round Power Spec** shown in white and polished chrome | **f. Power Dot** shown in Foil powder coat | Undersurface options: **g. Charging Trac** shown in Storm powder coat | **h. Power Rail** shown in Foil powder coat



FLOW CABLE MANAGEMENT

